

Mystery of Mother Tincture

ABSTRACT: *Practice with mother tinctures is a popular mode of treatment prevalent among a group of homoeopaths which is more often palliative than curative. In some cases application of mother tincture is required to save the patient from dangerous complications, so as to save their life. But it should not be made a habit to prescribe it in every case. Here I intend to describe the indications and practical guidance of the mother tinctures of few medicines which are commonly used in our clinics.*



Dr SWAPAN PAUL BHMS, MD (HOM)

Reader/Asso. Professor, Dept. of Materia Medica

Jawaharlal Nehru Homoeopathic Medical College, Limda, Waghodia, Vadodara, Gujarat

30, Tulsi Society, Nr Javernagar, Waghodia Rd, Dist Vadodara, PIN 390019, Gujerat, Mob: +919428692085/+919712223235

INTRODUCTION

Mother tincture is the extract of the drug substance after being treated with specific vehicle (mostly with alcohol). We have various sources of the drug substance namely *vegetable, mineral, animal, nosodes, sarcodes, imponderabilia and synthetic*. It is the original, primary tincture which is directly prepared

from the corresponding source of the particular drug according to the principles of homoeopathic pharmacy. The term is denoted as Ø. Among all these sources, the term mother tincture is most suitable for vegetable drug substances.

Mother tincture of vegetable substances are prepared from *fresh whole plant or parts thereof*,

roots, barks and leaves with the help of alcohol. The juice of the plant roots or leaves contain all the alkaloids and alcohol acts as a preservative. Animal substance and the dried plants are also prepared in the form of mother tinctures with the help of alcohol.

It is more safe to employ mother tinctures which are prepared from vegetable source (than other sources) internally, to get the specific action for which it was prescribed. It is to be remembered that mother tinctures mostly act at organ level or tissue level and are most often palliative.

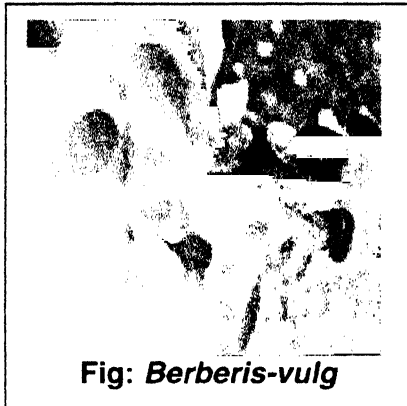


Fig: *Berberis-vulg*

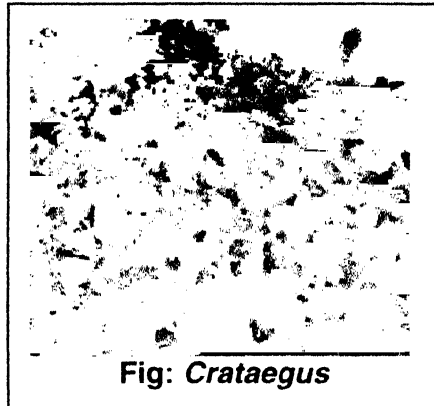


Fig: *Crataegus*

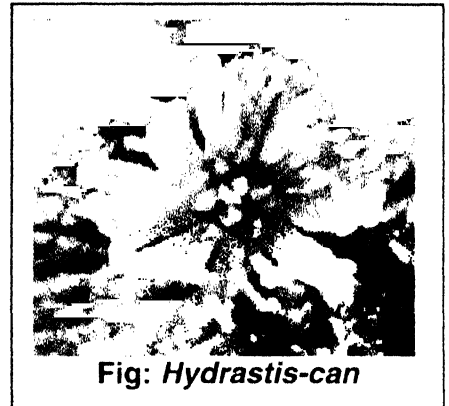


Fig: *Hydrastis-can*

PREPARATION OF MOTHER TINCTURES

There are two methods of preparation of homoeopathic medicines – *old method and new method.*

OLD METHOD

CLASS	PRINCIPLE	PARTS USED	EXAMPLES
<i>Class – I</i>	The juiciest plants are used. The ratio of drug substance and alcohol is 1:1.	Fresh whole plant is used.	“ <i>Belladonna</i> ” in Materia Medica Pura <i>Acon-n, Bry-a, Calen, Chel. Mill, Ruta-g, etc.</i>
<i>Class – II</i>	The juicy or less juicy plants are used. The ratio of drug substance and alcohol is 3:2.	The parts of the plant.	“ <i>Thuja</i> ” in Materia Medica Pura. <i>Euphr-off, Oleand, Samb n, Vinc-min, etc</i>
<i>Class – III</i>	The least juicy plants are used. The ratio of drug substance and alcohol is 1:2.	The fresh plants or the parts (roots, bark, leaves etc)	“ <i>Scilla</i> ” in Materia Medica Pura. <i>Abies-c, Abrot, Aeth-c, Arn-m, Bapt-l, Berb-v.</i>
<i>Class – IV</i>	The dried plants, herbs, animal substances are used. The ratio of drug substance and alcohol is 1:5.	Pulverized dried vegetables and animal products.	“ <i>Staphysagria</i> ” in Materia Medica Pura. <i>Cina, Coffea, Ipecac, Nux m, Canna i, Asafoet, Lyco, etc.</i>
<i>Class – V(A)</i>	The substances easily soluble in water are used. The ratio of drug substance and water is 1:9.	Whole substance which is easily soluble in water.	<i>Sulph-ac, Mur-ac, Nit-ac, Nat-m, Amm-m, etc.</i>
<i>Class – V(B)</i>	The substances soluble in greater amount of water. The ratio of drug substance and water is 1:99.	Whole substance which is soluble in large amount of water.	<i>Ox-ac, Kali-bi, Pic-ac, Kali-br, Brom, Borax, etc.</i>

<i>Class – VI (A)</i>	The substances easily soluble only in alcohol are used. The ratio of drug substance and alcohol is 1:9.	Whole substance which is easily soluble in alcohol.	“ <i>Guaiacum</i> ” in <i>Materia Medica Pura</i> . <i>Abies-n, Camph, Glon, Amyl-n, etc.</i>
<i>Class – VI (B)</i>	The substances soluble in greater amount of alcohol. The ratio of drug substance and alcohol is 1:99.	Whole substance which is soluble in large amount of alcohol.	<i>Crot-t, Iod, Kreso, Sant, Taren, Opium, etc.</i>
<i>Class – VII</i>	Triturating of dry drug substances which in their crude state neither soluble in water or alcohol.	Whole substance triturated with sugar of milk.	“ <i>Arsenic-alb</i> ” in <i>Materia Medica Pura</i> . <i>Carb-a, Carb-v, Arg-m, Alumi, Ant-c, Bar-c, Calc-c, Garph, etc.</i>
<i>Class – VIII</i>	The substances which are neither soluble in water nor in alcohol	Triturating of drug with sugar of milk.	“ <i>Petroleum</i> ” in <i>Chronic Disease</i> . <i>Crot-h, Bufo-r, Lach, Lyssin, Naja-tri, Vipe</i>
<i>Class – IX</i>	Preparation from fresh vegetables and animal substances. The ratio of drug substance and sugar of milk is 2:99.	The whole or parts of the drug substance is triturated with sugar of milk	“ <i>Agaricus</i> ” in <i>Chronic Disease</i> . <i>Blatta-or, Anac-or, Carcino, Medor, Syphi, Maland, etc.</i>

NEW METHOD

1. *Maceration*: The gummy and mucilaginous substances or other materials possessing viscid matter are used for extracting the medicinal properties from the drug substance.
2. *Percolation*: It is a special method applied when a liquid capable of dissolving only a portion of a powdered material spread on porous materials, passes through succeeding layers of powder.

INDICATIONS OF SOME MOTHER TINCTURES

ALETRIS-FERINOSA (STARGRASS)

- i. In anaemia especially in females, pregnant mothers.
- ii. The patient is tired all the time, and suffers from prolapse, leucorrhoea, rectal distress etc.
- iii. Relaxed condition, habitual abortion.

Avena-sativa (Common Oat)

- i. Nervous exhaustion, sexual debility, morphine habit, bad effects of morphine.
- ii. Best tonic for debility after exhausting diseases.
- iii. Acute coryza (20 drops in hot water, hourly

for few days)

- iv. Sleeplessness especially of alcoholics.
- v. 10-20 drops of tincture, preferably in hot water.

Alfalfa (California Clover or Lucerne)

- i. Favourably influences nutrition.
- ii. Toning up the appetite, improves digestion, induces weight gain, resulting in greatly improved mental and physical vigour.
- iii. Persons with disorders of digestion and malnutrition eg neurasthenia, nervousness, insomnia, nervous indigestion.
- iv. Act as a fat producer, corrects tissue waste.
- v. Deficient lactation, increases quality and quantity of milk in nursing women.
- vi. 5-10 drops of tincture several times daily, to be continued until tonic effects ensue.

Acalypha-indica (Muktajhuri or Muktabarshi)

- i. Violent cough followed by bloody expectoration.
- ii. Pure blood comes in the morning and dark lumps of clotted blood in the evening.
- iii. Spluttering diarrhea with forcible expulsion of noisy flatus.

iv. Gripping pain in abdomen, tenesmus and rectal bleeding.

Abroma-augusta (Olat Kambal)

- i. Mostly useful in cases of diabetes, albuminuria, leucorrhoea, amenorrhoea,
- ii. Profuse urination with frequent desire to drink after urination.
- iii. Albuminuria, with fishy odor of urine.
- iv. Menses irregular, dark, clotted with colicky pain in abdomen 2-3 days before menses.
- v. Leucorrhoea profuse, white, thin, watery.

Aegle-marmelos and Aegle-fofia (Bel fruit and Bel leaf)

- i. Bleeding piles, diarrhea, dysentery, fever with dropsy, excellent in beri-beri.
- ii. Dropsical swelling due to heart disease.
- iii. Anorexia with disorders of stomach.
- iv. Flatulence, wind comes out with loud noise <in afternoon.
- v. Amoebic and bacillary dysentery.
- vi. Continuous influenzal fever with hepatic and splenic disorders.

Amoora-rohitaka – Andersonia (Rohitaka)

- i. General debility, liver and spleen disorders, leucorrhoea.
- ii. Nausea, vomiting with enlargement of liver and spleen.
- iii. Feverish headache with flushes of face and burning in hands and feet.

Andrographis-paniculata (Kalmegh)

- i. Acute cold and cough, general debility after prolonged fever, jaundice in children with enlarged liver.
- ii. Red eyes, watering nose, occasional sneezing, bitter taste in mouth, and dryness and burning in throat.
- iii. Fever with chilliness; comes at 11 am and again at 7-8 pm with headache.

Atista-indica (Ash-sheora)

- i. Biliary colic, diarrhea, flatulency, worms.
- ii. Canine hunger; strong desire for lime-juice.
- iii. Flatulence temporarily relieved by eructation.
- iv. Indigestion due to worms with colicky by

pain in abdomen.

v. Renal colic with tenderness in kidney region.

Atista-radix (Root of Ash-sheora)

- i. Dysentery, worm infestations
- ii. Both amoebic and bacillary dysentery.
- iii. Passes much blood in stool with intense pain in umbilical region.
- iv. Autumnal dysentery.

Azadirecta-indica (Nim or Margosa bark)

- i. Fever, scabies, pemphigus, gastric disorders.
- ii. Fever with or without chill from 4.30 am with burning in various parts.
- iii. Insufficient, hard, knotty stools, constipation.
- iv. Clutching pain in umbilical region with passage of offensive flatus.
- v. Fever with copious sweat especially on forehead, neck, upper part of the body, (no sweat on lower part)

Aspidosperma (Quebracho)

- i. Bronchial asthma, cardiac asthma
- ii. Stimulates respiratory centres increasing oxidation of blood and excretion of carbonic acids.
- iii. "Want of Breath" during exertion.
- iv. Mother tincture, every hour for 2-4 doses, then 4 hrly.

Apocynaum-cannabinum (Indian Hemp)

- i. In albuminuria with dropsical condition.
- ii. Anasarca, hydrothorax, suppression of urine, stangury, hydrocephalus, ascites.
- iii. Nausea, vomiting, mitral and tricuspid regurgitation, acute alcoholism.
- iv. Tincture 10 drops three times daily; in acute alcoholism 1 dram of decoction in 4 oz water, 4 hrly.

Hydrastis-canadensis (Golden seal)

- i. Jaundice; torpid, tender liver
- ii. Gall stone; dull dragging pain in right groin.
- iii. Cancer and cancerous state; before ulceration, when pain is principal symptom.
- iv. Goiter of puberty and pregnancy.
- v. Constipation with sinking feeling in stomach.

Justicia-adhatoda Basaka (Singhee)

- i. Acute catarrhal condition of the respiratory



tract.

- ii. Excessive cough; paroxysmal cough, with suffocative obstruction of respiration.
- iii. Whooping cough; tightness across chest; severe dyspnoea with cough.
- iv. Fluent coryza with profuse lachrymation and sneezing.
- v. Asthmatic attack, can't endure a close, warm room.

Passiflora-incarnata (Passion flower)

- i. Restless and wakeful, resulting from exhaustion.
- ii. Sleeplessness, especially in the feeble, infants and aged.
- iii. Insomnia of infants and the aged, and the mentally worried, and overworked, with tendency to convulsions.
- iv. In whooping cough; acts as an antispasmodic.

Pareira-brava (Virgin-vine)

- i. Renal colic; prostatic affections and catarrh of bladder.
- ii. Constant urge; great straining; pain down thighs during efforts to urinate.
- iii. Can emit urine only when he goes on his knees, pressing head firmly against floor.
- iv. Dribbling micturition; violent pain in glans penis.

Syzygium-jambolanum (Jambol Seeds)

- i. Has an immediate effect of increasing blood sugar, glycosuria results.
- ii. Most useful in diabetes mellitus; no other remedy causes so marked a degree of diminution and disappearance of sugar in the urine.
- iii. Great thirst, weakness and emaciation.
- iv. Large amount of urine with high specific gravity.
- v. It affects sugar metabolism; if administered at suitable intervals in diabetes mellitus, the blood sugar is maintained at a normal level and the urine remains free of sugar.

Sarsaparilla (Smilax)

- i. Renal colic; severe pain at conclusion of uri-

nation.

- ii. Dribbling of urine while sitting.
- iii. Child screams before or while passing urine; sand on diaper.
- iv. Renal colic and dysuria in infants; pain from right kidney downward.

Thlaspi-bursa-patoris (Shepherd's purse)

- i. Anti-haemorrhagic, anti-uric acid; albuminuria during gestation.
- ii. Haemorrhage from uterine fibroid with aching in back or general bruised soreness.
- iii. Uterine haemorrhage, with cramps and expulsion of clots.
- iv. Effects of suppressed uterine disease.

Liatris-spicata (Colic root)

- i. A prompt diuretic; renal dropsy.
- ii. Of use in dropsy due to liver and spleen diseases.
- iii. Here the suppressed urination is most favourably influenced.
- iv. Anasarca or generalized oedema due to heart or kidney disease.

Sabal-serrulata (Saw Palmetto)

- i. Prostatic enlargement, epididymitis or urinary difficulty.
- ii. Valuable for undeveloped mammary glands.
- iii. Promotes nutrition as tissue building.
- iv. General and sexual debility.

Carica-papaya (Penpay)

- i. Dyspepsia, enlarged liver and spleen.
- ii. Hepato-splenomegaly with fever.
- iii. Promotes digestion in those who can't tolerate meat or milk.
- iv. When applied locally in the mouth of uterus, it induces abortion by contracting the uterus.

Convallaria-majalis (Lily of the valley)

- i. Dyspnoea, dropsy, anasarca, ventricular failure with over-distension and dilatation, angina, tobacco-heart.
- ii. For symptoms of heart failure give 1-15 drops of tincture.

Crataegus (Hawthorn Berries)

- i. Hypertension, cardiac tonic, insomnia of car-

diac origin.

- ii. 1-15 drops of tincture must be used for some-time in order to obtain good result.

Chelidonium-majus

- i. Jaundice, hepatic enlargement, gall-bladder obstruction; constipation.
- ii. Yellow coated tongue, large and imprint of teeth.
- iii. Hard, ball like stool.
- iv. Prefers hot food.

Cactus-grandiflorus (Night blooming cereus)

- i. Angina pectoris, hypertension, palpitation.
- ii. Palpitation with vertigo, dyspnoea and flatulency.
- iii. Violent palpitation worse when lying on left side. < at approach of menses.
- iv. Constricting pain in chest, spasmodic in nature.

Chelone (Snakehead)

- i. Hepatomegaly with pain and soreness, round and thread worms.
- ii. It is an enemy to every kind of worm that infests the human intestine.
- iii. 1-5 drops doses.

Cinnamonum (Cinnamon)

- i. Post partum haemorrhage, cancer when pain and fetor are present, disinfectant.
- ii. Germicide and disinfectant in aqueous solution.
- iii. Three drops in sugar of milk for hiccough.

Echinacea-rudbeckia (Purple Cone -flower)

- i. Correction of blood dyscrasia, Blood poisoning, Septic conditions, Gangrene, Goitre, Cancer, Appendicitis, Snake-bites.
- ii. Last stage of cancer to ease pain.
- iii. Goiter with exophthalmos often 5-10 drops injection in thyroid gland.

- iv. It promotes suppuration and a neglected appendicitis with pus formation would probably rupture sooner under its use.
- v. Snake-bites and bites and strings generally.
- vi. Foul discharge from gangrene with emaciation and debility.

Epigea-repens (Trailing Arbutus)

- i. Cystitis, dysuria, renal calculi.
- ii. Mucous and uric acid deposit; tenesmus after micturition.
- iii. Gravel, renal calculi, fine sand in urine of a brown colour.
- iv. Burning in neck of bladder whilst urinating and tenesmus afterwards.

Eryngium-aquaticum (Button Snake-root)

- i. Strangury, renal colic, benign hypertrophy of prostate.
- ii. Thick, yellow mucous discharge in urine.
- iii. Difficult and frequent micturition.
- iv. Pain in renal region running down the ureters and limbs.
- v. Irritable bladder from enlarged prostate gland.

Geranium-maculatum (Cranes's bill)

- i. Headache, haemorrhage, ulcer stomach.
- ii. Lessens vomiting in gastric ulcer.
- iii. Atonic and foul ulcers.
- iv. Locally in ulcers, it will destroy the pyogenic membrane.

CONCLUSION: The indications described here are observed and verified by many homoeopaths in their clinics. The use of mother tinctures must be guided by the physician's own observations in the patients. The mother tinctures should not be randomly prescribed in clinics. Proper dose and repetition should be maintained to avoid any complications.

☺☺ Ordering fast food ☺☺

One night, a few co-workers at the computer data centre where I work stayed late and we all started to get hungry. We decided to order in food by phone, but our boss thought that, since we work with computers, it would be more appropriate to order by Internet. After we contacted a fast food chain's web site and spent a long time registering as new customers for the delivery service, a message appeared on the screen: "Thank you for your business. You will be able to order food in three days."