

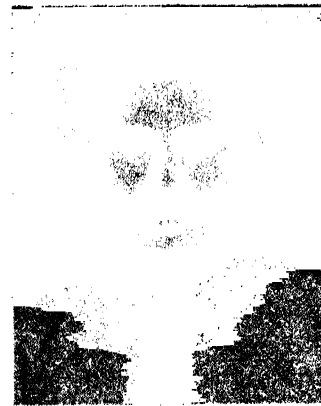
# LEUCORRHOEA

**L**eucorrhoea means the white discharge from the vagina. It is natural and essential to have a wet atmosphere inside the vagina. Eventhough the vagina has no glands, the liquid secretions coming from the uterine glands with an admixture of fluids exuding from the vessels located in the vaginal walls moisten the inner surface. This secretion is of light milky in colour which contains large number of bacteria known a vaginal bacilli (Doderlein's bacilli). These bacterial produce lactic acid by the fermentative action on glycogen present in vaginal walls, and create an acid medium there, preventing the growth of pathogenic bacteria. In healthy condition the vaginal secretion will be odourless. In morbid conditions, the number of vaginal bacilli decreases very much and as a result, the acidity of the vaginal medium diminishes and various pathogenic microbes begin to grow there. In such cases the vaginal discharge changes in colour and odour. This condition requires treatment.

The physician must be able to distinguish simple leucorrhoea from purulent or muco-purulent discharge due to infective conditions of the cervix or endometrium. Hypertrophy of cervix, lesions or erosions can be detected on careful examination.

Leucorrhoea occurs almost as frequently in the virgin as in the married women. Gynaecologists classify vaginal hygiene into four degrees of cleanliness. In the First Degree, the vaginal secretion contains only vaginal bacilli and some epithelial cells. The Second Degree secretion contains vaginal bacilli, epithelial cells, single leucocytes and few microbes. The Third Degree secretion contains few bacilli, some epithelial cells, more leucocytes and more microbes. The Fourth Degree secretion contains no vaginal bacilli few epithelial cells, large number of leucocytes and very large number of various microbes like streptococci, B-Coli, Trichomonas, fungi or even the ova of worms.

Hygienic measures are most important in the case of girls from the new born stage itself due to the peculiarities of the external genitalia. Unlike the adult, the vaginal entrance of the new born girls is loose and dilated prone to easy penetration and multiplication of bacteria. Gonococcal infection is particularly dangerous. The



DR. P. ALI

girls' genitals should always be covered. An unwrapped girl child should never be placed on others' bed.

Occasionally, masturbation with secondary pelvic congestion and infection may turn as a causative factor for leucorrhoea. Ill health or prolonged menstruation may become predisposing features for leucorrhoea.

In some cases of married women, who come with leucorrhoea we can see a history of labour or miscarriage with possible lacerations or infection of the cervix and uterus. In other cases there may be old tubovarian disease with localised peritonitis.

## HOMOEOPATHIC TREATMENT

Diagnosis of the correct pathological condition at the time of the commencement of treatment is not an inevitable factor to start homoeopathic treatment. Homoeopath can reach to the apt medicine by getting all the subjective and objective symptoms from the patient and relatives in their own language. The human body, especially if its sensibility is heightened by disease, is a more sensitive recorder than laboratory instruments. For the diagnosis of a disease, objective symptoms are of most importance. In diagnosing (selecting) the homoeopathic remedy, subjective symptoms carefully collected and graded, and correctly interpreted are of greater

---

\* HOMOEOPATHIC HOUSE, KONDURKARA P.O., PATTAMBI - 679 303, KERALA

value.

Some of the often indicated remedies in leucorrhoea cases are given below :

1. **ALETRIS FARINOSA** : This remedy has a direct action on the female pelvis. It is indicated in anaemic girls with uterine atony. The patient is tired both mentally and physically.
2. **BORAX** : is useful in cases of leucorrhoea which appears just midway between the menstrual terms. Albuminous discharge like the white of egg with sensation as if warm water were escaping. BOVISTA also has discharge like white of egg. But it starts a few days before or after the menses.
3. **CALCAREA CARB** : is useful for leucorrhoea of infants and before puberty, with itching. CANNABIS SATIVA is another remedy to think of infantile leucorrhoea.
4. **GRAPHITES** : is beneficial in induration and congestion of cervix. Excoriating, profuse leucorrhoea occurs in gushes day and night. Leucorrhoea may replace menses which are usually delayed, pale and scanty.
5. **HELONIAS DIOICA** : The leucorrhoeal discharge has an offensive odour and there is a persistent itching of the genitals. This remedy is indicated in feeble minded woman with prolapses and other displacements. Cervix ulcerated or raw from erosion.
6. **HYDRASTIS CANADENSIS** : It is a valuable remedy in both vaginal and uterine Leucorrhoea. It is profuse, yellow, tenaceous and the patient complain of great prostration and palpitation on slight exertion. There may be bleeding associated with leucorrhoea. Here this remedy can be used internally as well as externally. When the discharge hangs from long viscid strings, think of this remedy. KALI BICH also has such ropy strings.
7. **KREOSOTUM** : Leucorrhoea like menses, occurs intermittent. Discharge ceases without any cause and reappears as badly as before. Acrid yellowish whit leucorrhoea aggravated on standing. The discharge leaves yellow spots on linen and stiffening it like starch, with offensive smell.
8. **MAGNESIA MUR** : Hysterical, abdominal and uterine cramps extending to thighs and followed by thick mucous leucorrhoea can be considered as the main indication for the use of this remedy.
9. **AMMONIUM CARB** : is a valuable remedy when the discharge is of a burning, pungent and excoriating

nature, which produce excoriations and ulceration in vulva. Pain in abdomen and back, loss of appetite, sleepy by day and sleepless at night are the other characteristic features of this remedy.

10. **AESCLUS HIP** : is suitable for leucorrhoea with lameness in back across sacro-iliac articulation, the discharge is dark yellow, thick and sticky. Aggravation after menses. Leucorrhoea with piles.
11. **NATRUM CARB** : is useful in women when leucorrhoea become a cause for infertility. Discharge of mucus from vagina after an embrace and thus preventing conception. Aversion to men and society. The discharge is thick yellowish and offensive.
12. **NATRUM MUR** : Leucorrhoea in women with craving for salt and salty food. Leucorrhoea with headache and bearing down pressure as if prolapse would occur. Aversion to sexual intercourse and irritable mood after intercourse are the mental deviations noticed where Natrum Mur will correct the mind and cure the disease.
13. **NITRIC ACID** : Flesh coloured or green and offensive leucorrhoea with syphilitic ulcerations. The discharge leaves spots on the linen surrounded by black borders. Brown urine with foetid odour. The leucorrhoea consists mucus which can be drawn out like thick strings. This symptom can be seen in Kali Bich and Hydrastis also.
14. **PULSATILLA** : Painless leucorrhoea with thick white discharge in young tearful females with aggravation on lying down, and amelioration in fresh air. Cramps in abdomen before and during menses.
15. **SANGUINARIA** : Foul smelling corroding brownish leucorrhoea with coporeal endometritis with polipi or granulation, come under the curative power of Sanguinaria. It is beneficial in the climacteric period associated with haemorrhage.
16. **SEPIA** : Suitable for tall slender women with narrow pelvis. Leucorrhoea profuse with foetid odour or like pus with drawing pains in abdomen and itching in vagina. A sensation that everything would protrude from the pelvis through the vagina and hence she crosses her limbs to prevent it.
17. **STANNUM** : is indicated in leucorrhoea with marked loss of strength. Prolapse uteri during hard stool. Due to extreme weakness she has to sit down several times while dressing.

Besides the above mentioned medicines, ALUMINA, AMBRA GRISEA, BOVISTA and SULPHUR are to be classified among the head remedies for leucorrhoea.

When there is severe back ache, OVA TOSTA 3x will give considerable relief. ABROMA AUGUSTA Q 10 drops BID can be administered with much benefit in leucorrhoea cases connected with dysmenorrhoea, constipation and frequent micturition.

## LEUCORRHOEAL REPERTORY

Leucorrhoea from chlorosis	: Calc.c, Chi, Ferr, Nat.m, Phos, Pul, Sep
Leucorrhoea with erosions and granulations	: Ant. t, Arg. n, Calend, Hydr, Iod, Merc, Sabin, Thuj
Leucorrhoea with organic disease of uterus	: Ars, Ars-iod, Carbo veg, Graph, Kreos, Mere, Sulph.
Leucorrhoea with digestive disturbances	: Calc carb, Cocc, Coff, Lyc, Nux vom, Phos, Puls
Leucorrhoea with sexual excitement	: Chin, Plat
Leucorrhoea with indifference & aversion to coition	: Caust, Natr mur
Acrid leucorrhoea	: Alum, Ammon c, Ars, Bor, Carbo v, Con, Kali iod, Kreos, Lach, Natr m, Nitr ac, Sabin, Sep
Bloody leucorrhoea	: Ars, Baryta c, Chin, Cocc, Trill
Bluish leucorrhoea	: Ambra
Brown leucorrhoea	: Amm m, Lil, Nit ac, Sang, Sec, Sil,
Burning leucorrhoea	: Bor, Kreos, Mag sul, Puls
Cervical leucorrhoea	: Alum, Calc, Cimici, Eucal, Hydr
Chronic leucorrhoea	: Alum, Bor, Calc, Erig, Ign, Iod, Mez, Sec, Sil, Sulph
Clear leucorrhoea	: Alum, Aur, Podo
Coagulated in clots	: Ambra, Bov, Chin, Merc, Ust
Constant leucorrhoea	: Brom, Ham, Mag mur, Thuj
Corrosive leucorrhoea	: Aesc, Alum, Ars, Bor, Iod, Lyc, Puls, Sabin Sang
Cream like leucorrhoea	: Alum, Calc, Calc Phos, Puls, Sec, Sep, Trill
Dark leucorrhoea	: Aesc, Agar, Croc, Kreos, Nux mos, Sec
Debilitating leucorrhoea	: Aletris, Aral, Ars, Calc, Chin, Con, Helon, Iod, Kreos, Stan, Trill
Excoriating leucorrhoea	: Bor, Bov, Iod, Kreos
Excoriating Perinium	: Lil
Excoriating thighs	: Ant cr, Aur, Bar c, Caust, Graph, Iod, Kros, Sabin, Sep, Sulph, Zinc
Greenish leucorrhoea	: Ananth, Apis, Asaf, Bov, Carb v, Kali bi, Iach, Merc, Murex, Nat M, Nitr ac, Sep
Gushes	: Calc, Cocc, Graph, Lyc, Sabin, Sil
Intermittent	: Calc, Con, Kreos, Mag mur

Like white of egg	: Alum, Amm mur, Berb, Bor, Bov, Calc, Calc phos, Daph, Hydr, Mez, Petro, Plat, Sulph, Ust
Linen corrodes	: Iod
Brownish stains on linen	: Lil
Greenish Stains on linen	: Bov, Lach, Thuj
Yellow stains on linen	: Agn, Ars, Carb an, Ceanoth, Chel, Graph, Kreos, Nux, Prun, Sep, Sulph, Thuj
Stiffening the linen	: Alum, Kali bi, Kreos, Lach
Flowing like menses	: Caust, Kreos, Magn sulph
Odourless leucorrhoea	: Bufo, Puls, Viburn
Offensive, foetid ..	: Amm mur, Aral, Arg met, Ars, Asaf, Bapt, Bufo, Calc, Carbo ac, Chi, Curare, Hydr, Kreos, Natr c, Nitr ac, Nux, Psor, Sabin, Sang, Sec, Sep, Trill, Ust
Profuse leucorrhoea	: Caust, Natr m,
Purulent leucorrhoea	: Alum, Ananth, Arg met, Buf, Chin, Cocc, Cinnab, Ign, Kreos, Merc, Nitr ac, Sabin, Sep
Ropy leucorrhoea	: Croc, Hydr, Ferr iod, Kali bi, Nitr ac, Sabin
Only at night	: Ambr, Caust, Lac can
While walking	: Mag, c, Natr m, Phos
With itching in vagina	: Con, Sep
Itching eruption on labia	: Sep
After menopause	: Sang
After coition	: Natr c, Sep

## ACCESSORY MEASURES :

In addition to proper treatment and hygiene, correct nutrition, fresh air, proper exercise and mental condition are essential parts for a speedy and radical cure of ailments.

Dissolve a little Alum ( $K_2SO_4 \cdot Al_2(SO_4)_3 \cdot 24 H_2O$ ) in warm water and take hip bath, Vaginal douche can also be done with the same solution. These measures will help to relieve leucorrhoea.

After taking bath, in olden days, the Indian ladies used to stand over a pot of fire in which the resin of *Boswellia serrata* (Malayalam : MANIKKUNDIRIKKAM) is placed to produce dense fumes which was allowed to enter the vagina by stretching the labia apart. This "Granny's technique" was helpful to maintain a good hygienic condition of the female genitalia. We can advise this technique also to leucorrhoea patients. ●