



Kirlian Photography

ABSTRACT: Kirlian photography is an auxiliary tool which will help the Homoeopath to sail in the right direction with the help of the Similimum. Basically there are 3 energy patterns seen in Kirlian namely Endocrine, Toxic and Degenerative emission quality. Each has its own peculiarities.

Dr ARDESHIR T JAGOSE MD (Hom)
 PG Co-coordinator & Asstt Prof Organon Department.
 YMT Homoeopathic Medical College, Kharghar, Navi-Mumbai.
 Clinic: Saifee Hospital Polyclinic, Opposite Charni Road Station, Mumbai 400004.
 Tel : 267570111. E-mail: drajagose@hotmail.com & drajagose@yahoo.com



HISTORICAL BACKGROUND

At the end of the 1930s, the Soviet electronic engineer, Mr Semjon D Kirlian and his wife, Valentina, discovered that living objects, which are taken into a high frequency field, send out ciliary crowns into the area of visible light.

In 1973 Peter Mandel began experimenting with Kirlian Photography and with the help of his brother, who had the technical know-how, the already widespread EEA came into being.

INTRODUCTION

It is commonly known as Energy Emission Analysis (EEA). It shows the electromagnetic field surrounding the body. This is usually achieved by placing the finger and toe tips on a photographic unit and the energy emissions from these regions are recorded. As acupuncture points coincide with the energy patterns emanating from the subject, disturbances in the electromagnetic field can be diagnosed and treated.

In the high-frequency field of the EEA apparatus, electrons come out of fingertips and toes increasingly and are accelerated towards the photographic paper. The ciliary crown around each finger is closed in case of an undisturbed energetic flow. There are no gaps or "windows".

However, if there are blockages in the body, the corresponding meridians are sometimes

interrupted, or the flow of energy is weakened. In such cases there are gaps in the ciliary crown at the referring sectors visible in the EEA picture. Even psychological problems can cause a breakdown of the energetic flow in the meridian system. Then there is a very big loss of radiation in the EEA picture.

EXAMINATION WITH EEA PHOTOGRAPHY

The physical energies are already disturbed long before the symptoms of a disease appear. Clinical examination methods would show no result at this early stage, the so-called "incubation". But in the EEA picture, changes are already visible.

At the beginning of a diagnosis, the doctor has to find out which disease category the patient belongs to.

Peter Mandel defined three constitution groups, by which all kinds of illnesses can be categorized:

1st group: Endocrine emission quality

2nd group: Toxic emission quality

3rd group: Degenerative emission quality

If the possibly varying energetic field appears irregularly, then the organism belongs to the first – the least ill – group.

If the irregularity increases during the years, then the organism passes from the first into the second – the more serious – toxic group or finally gets into the third, degenerative state.

The emission qualities of the third group indicate the more serious illnesses.

THREE KINDS OF EMISSION PATTERNS

1. ENDOCRINE EMISSION QUALITY

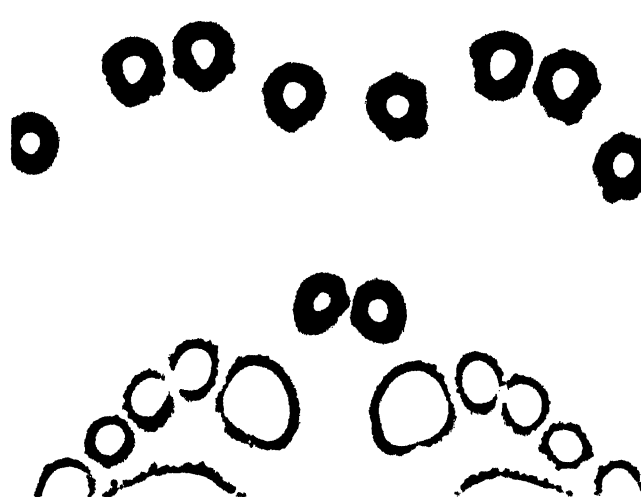
The endocrine emission quality points to a



weakness of the vegetative nervous system. Among this group are people who are nervous, anxious and also depressive. The patient complains about circulatory disorder, headache, cold feet, sweating hands, digestive problems, etc. The heartbeat is uneven and quicker than usual.

2. TOXIC EMISSION QUALITY

This type is recognizable by the black spots within the ciliary crown. The gravity of



development can be fixed by the intensity of these signs in the complete picture. Also the location of the spots is decisive. Even at this emission type, clinical examination methods often yield no results. The patient, however, complains about permanent problems and are often already heavily restricted in their general capability.

3. DEGENERATIVE EMISSION QUALITY

The state of degenerative emission quality is proved by a massive, concentrated increase of energy and, additionally, by the disappearance and loss of emission luminescence. The phenomena generally



indicates diseases of a degenerative kind (eg arteriosclerosis, rheumatic changes, gout, organic damage, etc).

THE ROLE OF HOMOEOPATHIC TREATMENT

The aim of such treatment must be the return of the patient to the toxic or even the endocrine stage. Therefore it is necessary to reduce acidity and detoxify the organism and to strengthen the immune system. This can be achieved by administering the indicated Homoeopathic remedy according to the totality of symptoms. Thus the result of our medicines can be seen by change in pattern of the Energy Emission Analysis.



DATE	EVENT	VENUE
28 - 29 Oct 2009 9am - 5pm	SEMINAR ON SUCCESS STORIES IN HOMOEOPATHIC PRACTICE Final paper for Presentation Poster Presentation & Publication: 20 th Oct 2009 Phone: 011-28525533,28525749 Fax: 011-28521060 Email: ccrhindia@gmail.com	Central Council for Research in Homoeopathy 61-65, Institutional Area Opposite D Block Janakpuri, Delhi.
7-8 Nov 09	11TH HOMOEOPATHIC CONFERENCE ORGANIZER: HMAI Unit Org Sec: Dr Pankaj Tripathi - +919837165247 Fees: Rs 1200/- payable to 11th Homoeopathic Conference	Hotel Clark Shiraz Agra
13 -15 Nov 2009 9am to 5pm	HOMOEOPATHIC RESEARCH & CHARITIES Confluence and Beyond TOPICS: Fungi, Sea Animals, Carbons, Radio Active Substances, Insects, Birds, Worms etc. SPEAKER: Dr Divya Chhabra Fees: Student: Rs 900/- Doctors: Rs 1200/- Foreigners: US \$400 Fees include Tea and Coffee only. Cheque to favor "Homoeopathic Research & Charities" Address: F/2, Saraswat Colony, Niwas Path, Anusaya Rd, Santacruz (W), Mumbai 400 054. Tel: 2660 5680. Fax: 2660 5776 email: seminar2009@yahoo.com, www.homeopathyindia.org CONTACT: Vikas/Suvarna/Trupti- 26605680/26605776. Dr Abhijit 9819039371 Dr Vishal 9820054350	Choksey Auditorium Golden Jubilee Block Tata Memorial Hospital Dr E Borges Road Parel Mumbai - 400 012.
23 Jan 2010 10am to 5pm	WORKSHOP ON MIASMS SSMS PRE CONFERENCE WORKSHOP 10am to 1pm Case Analysis: Dr Ajit Kulkarni 2pm to 5pm Miasam: Dr Kasim Chimthanawala Fees: See Below	Choksey Auditorium Golden Jubilee Block Tata Memorial Hospital Dr E Borges Road Parel Mumbai - 400 012
24 Jan 2010 9.30am to 5.30pm	15TH SARLA SONAWALA MEMORIAL SEMINAR TOPIC: Infectious Diseases. Fees: LM Subscribers/Students Other Doctors Workshop: Rs 200/- Rs 400/- Rs 600/- SSMS: Rs 200/- Rs 400/- Rs 600/-	
5-7 Feb 2010	SEMINAR ON ACUTE CASES OF HEADACHE, DIARRHOE & COUGH ICR Pune Branch Fees: Rs 1200/- (includes B/F, Tea and Lunch) CONTACT: Dr Prakash Chareja 9373160173	Dinanath Mangeshkar Hospital Off Karve Road Pune



Crossword on Alternative Medicine

Dr SATISH P KANOJIA DHMS

Assistant Editor, Team NJH

1 Mangela Wadi, Juhu Tara Road, Santacruz (W), Mumbai -49

Email: kanojiasp@yahoo.co.in



This crossword is based on Alternative Systems of Medicine.

Solve it with the help of the clues given below. Happy hunting.

ACROSS

1) It is a Healing art based on the idea of animal magnetism (9)

3) This therapy can help to re-balance and/or stimulate these energies by applying the appropriate colour to the body and therefore re-balance our chakras (6)

6) _____ attempts to increase the overall energy stores of the body by activating the seven chakras (5)

8) In this therapy one has to everyday consume 1.5 liters of water (5)

10) This alternate therapy has been evolved by South Korean scientist Prof Park Jae Woo (5)

12) _____ is a technique of inserting and manipulating fine filiform needles into specific points on the body to relieve pain or for therapeutic purposes (11)

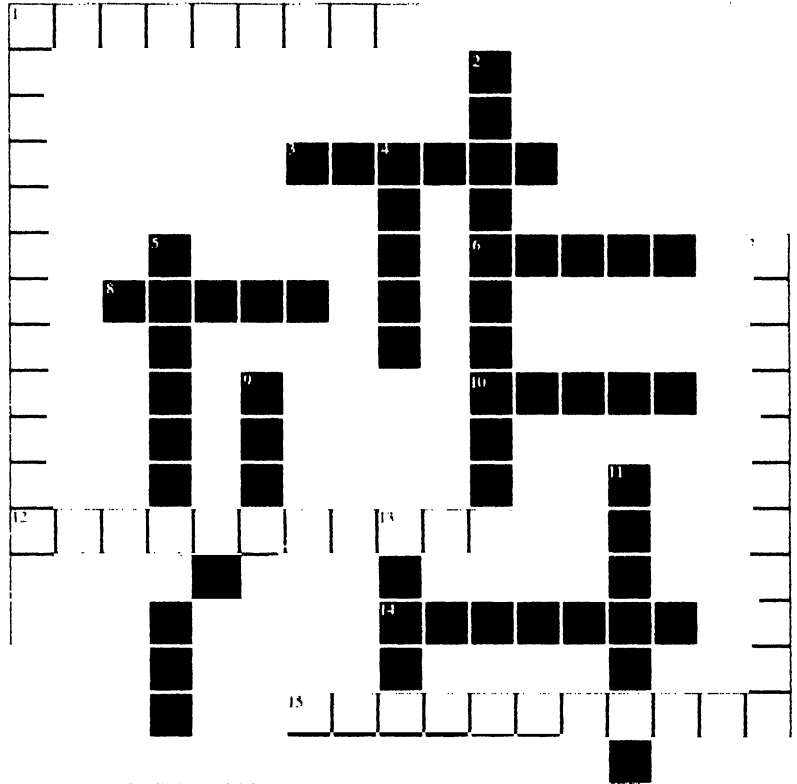
14) This ancient healing system is based on the theory that everything is composed of *Panchamahabhutas* (7)

15) _____ is a non-invasive, non-surgical approach for managing ortho-neuro-skeletal disorders (11)

DOWN

1) The treatment of diseases is by application of magnets on body (7,7)

2) _____ is an ancient healing art, various pressure points such as tips of the fingers and other such points are skillfully pressed which in turn stimulate body's natural self-curative abilities (11)



4) _____ therapy is also known as LED therapy (5)

5) Popularly referred to as the drug-less treatment of diseases, _____ is based on simple laws of nature to cure diseases (11)

7) This system of medicine is based on the law of, "Like cures like" (11)

9) Ozone has the potential to inactivate many types of bacterial and viral pathogens hence the name _____ therapy (5)

11) This ancient system of medicine recognises three forms of energy in the body – flame, wind and bile (7)

13) This system of medicine was brought to India by the Arabs and Persians (5)